



# Clinical AI that Moves You From Predictive to Prescriptive Intelligence

---

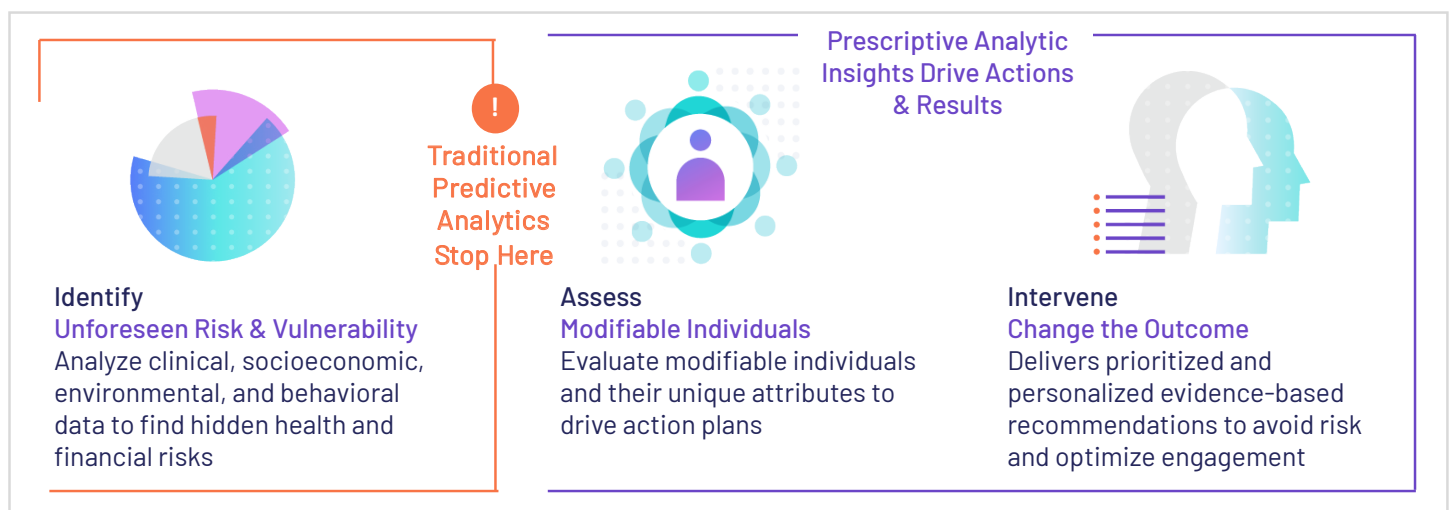
Overview

**jvion**

For more than a decade, Jvion has provided healthcare organizations with an accurate and concise way to find the health and financial risks driving avoidable adverse outcomes across care settings.

Jvion does not just identify existing risk – it pinpoints those individuals that are on an accelerated path to become high-risk or high-cost utilizers, their driving risk factors, and what can be done to stop that risk from ever becoming a reality.

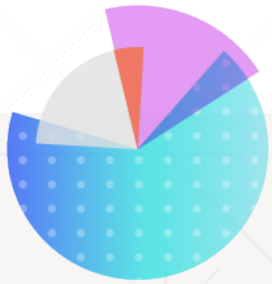
## Traditional Predictive Analytics vs. the Jvion CORE™



The differentiating factor for Jvion is its prescriptive clinical-AI foundation also known as the Jvion CORE. Traditional predictive analytics and machine learning approaches stop at the identification of risk. The CORE connects projected financial and health risks with the course of action that will stop it. The resulting insights lead to reductions in unnecessary utilization, better quality of care and outcomes, and improved patient engagement and financial performance for our customers.

Built on Microsoft Azure, the CORE is a secure and scalable prescriptive clinical-AI intelligence repository that aggregates structured and unstructured data, augments customer information with clinical, socioeconomic and experiential data from 30 million individuals and applies sophisticated algorithms to find correlations and inferences that matter.

Jvion's approach is **person-centric not problem centric**. The significance of this is that the CORE™ creates a **comprehensive risk profile for each patient**. The profile can then be viewed through different applications like Avoidable Admissions, Sepsis or Depression. The CORE surfaces **the individuals and populations whose risk trajectory, related to the area of concern, can be changed and how**. This eliminates the strain on analytic teams as well as the need to build and deploy multiple models when the area of risk a customer wants to address changes.



## JVION CORE™ Care Optimization & Recommendation Enhancement



Considers 4500 risk factors across clinical and socioeconomic data and a quadrillion dimensions of risk for each patient.



Uncovers vulnerable patients outside narrow risk bands.



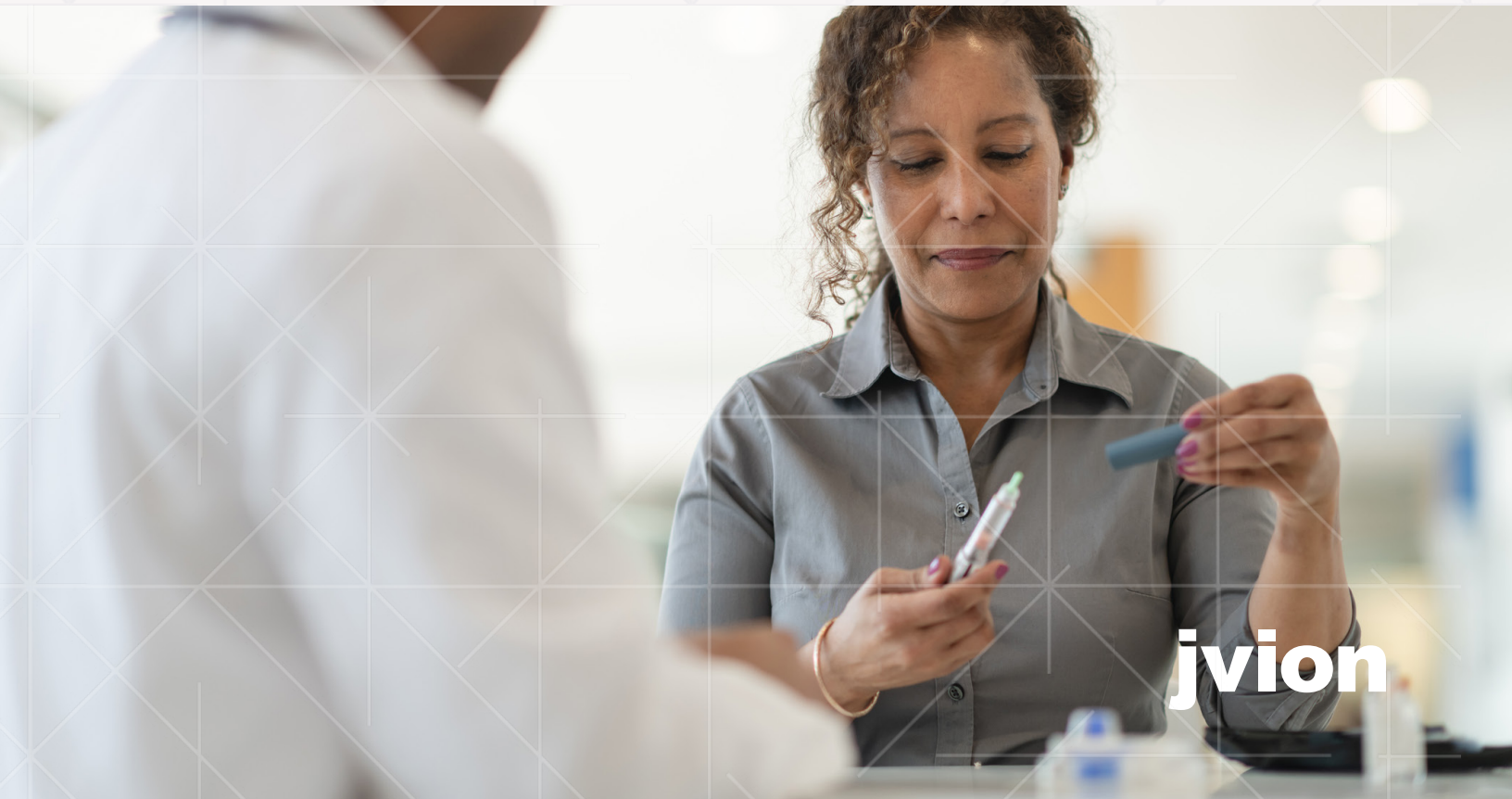
Delivers a prioritized list of individuals whose outcomes can be changed.



Provides personalized and prioritized recommendations to inform care coordination and clinical action.



Protects financial goals by proactively managing avoidable cost & utilization events before they become a quality or revenue event.

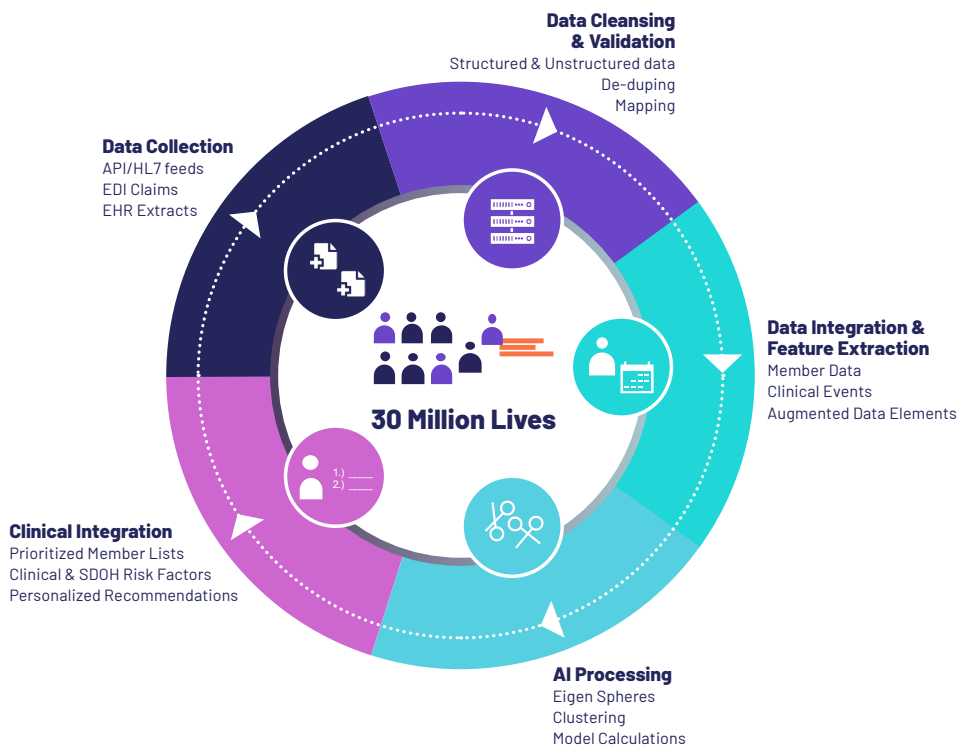


**jvion**

## Insights You Can Trust

Healthcare organizations are drowning in data. Knowing what data matters, why and how it can be leveraged to drive success is a daunting task. **This is where Jvion can change the game.**

Jvion enables organizations to **leapfrog over perceived barriers**, including structuring data, waiting months or years to learn from the data, building new models every time there is a new area of concern to address and not knowing what steps to take to change the outcome. Even when key patient information is missing, Jvion's repository of 30 million lives allows accurate inferences to be made. It is **not limited by set rules** that automatically limit visibility into unfolding trends and hidden risk. The correlations, inferences and learnings from deployed interventions are maintained and used to bolster our underlying algorithms and power the output of our products. The CORE is always learning and passing that knowledge on to our customers.



Data has value only if you know what to do with it. For instance, take a person's address. At a glance, it may have relevance as a possible indication of economic status or proximity to services. Useful information, no doubt. However, what if you knew that just because of where they live, that individual's risk of sepsis is six times higher than someone living two blocks away or their risk of readmission is 10 times higher?

The answer to those questions is the difference between information and impact, and the difference between other vendors and Jvion.

## Products Built to Deliver Prescriptive Insights

Jvion's product suites help healthcare organizations improve the patient experience, reduce unnecessary cost and utilization, bolster quality reporting results, and change health outcomes for the better.



Providers



Payers



PBMs



Others

Jvion's prescriptive clinical-AI has helped over 300 hospitals, payers, pharmacy benefit managers and other healthcare entities tackle:

- Financial recovery
- Uncompensated care
- Healthcare disparities
- Deterioration of behavioral health and chronic care conditions
- Unnecessary cost and utilization
- Declining quality scores
- Patient engagement
- Medication Non-adherence

Our portfolio of products addresses:

- Readmission Reduction
- Hospital Bed Maximization
- Behavioral Health
- Population Health
- Cost & Utilization Management
- Chronic Condition Management
- COVID Response
- Oncology
- Hospital Acquired Infections
- Medicare Population Management
- Hospice/Palliative Care
- Avoidable Admissions
- Member Activation & Engagement



To learn more call 470.427.2900 or visit [jvion.com](https://jvion.com).

## About Jvion

Jvion, a leader in prescriptive clinical artificial intelligence, enables providers, payers and other healthcare entities to identify and prevent avoidable patient harm, utilization and costs. An industry first, the Jvion CORE™ goes beyond predictive analytics and machine learning to identify patients on a trajectory to becoming high-risk. Jvion determines the interventions that will more effectively reduce risk and enable clinical and operational action. The CORE accelerates time to value by leveraging established patient-level intelligence to drive engagement across healthcare organizations, populations, and individuals. To date, the Jvion CORE has been deployed across hundreds of clients and resulted in millions saved.

